

Arkansas Health Network

Clinically Integrated Network
Fact Pack

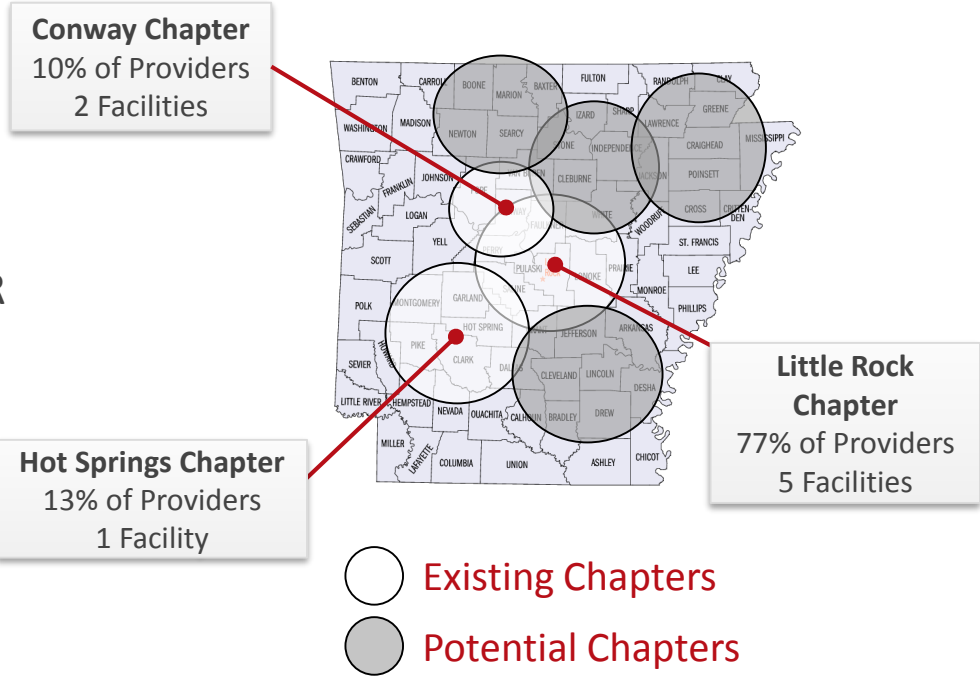
2018

Arkansas Health Network, LLC

Arkansas Health Network is a **physician led**, clinically integrated network initiative that builds on the strengths of participating providers to improve patient health, increase efficiency and enable physicians to succeed in today's changing health care payment and delivery environments.

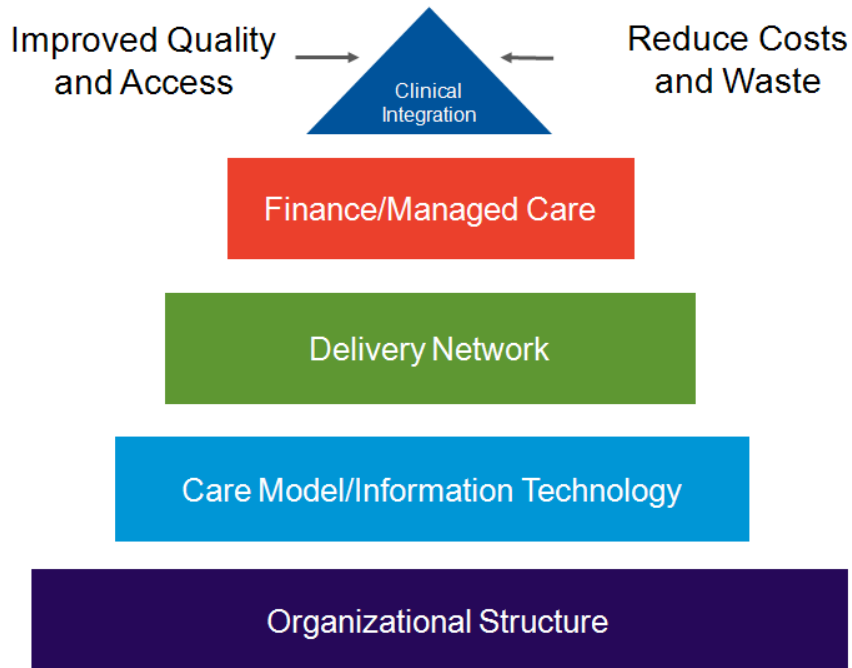
AHN by the Numbers:

- ✓ 92K+ value-based patient “lives” managed (and growing!)
- ✓ 1550+ participating providers across AR
 - 2/3 Independent
 - 1/3 Primary Care
- ✓ 3 **physician-led** chapters (LR, HS, Conway)



Arkansas Health Network

Meeting the definition of Clinical Integration



“Clinical Integration is defined as the extent to which patient care services are coordinated across people, functions, activities, processes, and operating units so as to maximize the value of services delivered. Clinical integration includes both horizontal integration (the coordination of activities at the same stage of delivery of care) as well as vertical integration (the coordination of services at different stages).”

5. Modified from Shortell SM; Anderson DA; Gillies RR; Mitchell JB; Morgan KL. Building integrated systems: the holographic organization. Healthcare Forum Journal 1993; 36(2):20-6.

**Clinical Integration allows groups to
“Face the Market as One”**

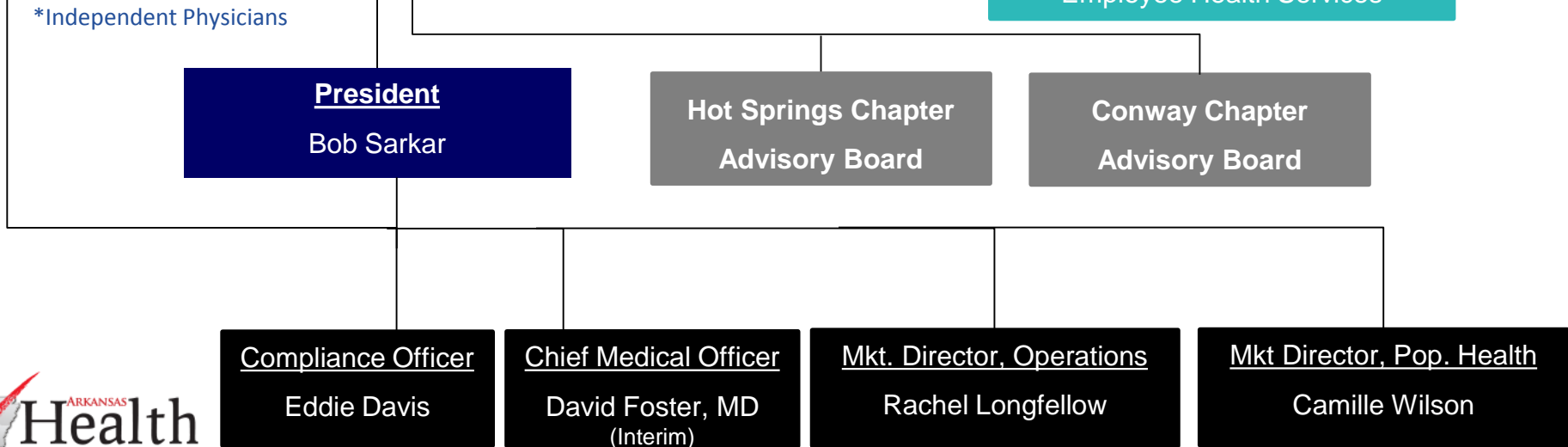
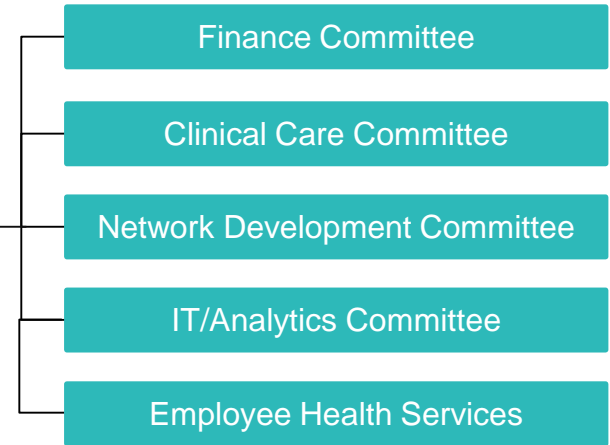
Guiding Principles

- Provide physicians with strong governance and leadership roles; AHN will be physician-led and physician-governed.
- Build on the capabilities of existing providers to improve the overall health of the patient populations AHN serves.
- Involve and support a strong network of excellent primary-care clinicians.
- Capitalize on the existing strengths and cost efficiency of CHI St. Vincent providers to be attractive to payers, employers and patients based on cost, quality and other key variables.
- Use a flexible vehicle to align physicians in independent community practices and those in hospital-affiliated practices.
- Provide participating physicians with network ownership opportunities.
- Partner with other physician practices, hospitals and networks locally and across Arkansas to meet payer needs.
- Remain flexible to adapt to changes occurring in the market and health care reform.

AHN Organizational Chart

Board of Managers

Daniel Felton, MD – Chair	John Meadors, MD
Bob Sarkar - President	Harold Hedges, MD
William McColgan, MD	Bob Muldoon, MD
Dr. Srin Ramaswamy	David Foster, MD
David Coussens, MD	David Griffin, MD
Lisa Sajovitz, MD	Tony Johnson, MD
Brooks Lawrence, MD (Conway Rep)	Kyle Roper, MD (HS Rep)



AHN Covered Lives & Contracts

MSSP ACO

25,284 lives

CHISV and CRHS Employees

7,045 + 2080 lives

PCMH

20,335 lives

CPC+

32,868 lives

QualChoice MA

1,501 lives

90% overlap w/ MSSP
For Medicare lives

Common Characteristics of Value-Based Contracts:

- ✓ Patients attributed based on where they receive a “plurality of primary care services”
~ existing clinic patients
- ✓ Incentives or shared savings based on COST and QUALITY performance

Key Metrics: Readmissions, chronic disease management, preventive medicine, ED Visits, post-acute utilization

- ✓ Care coordination and data are most important resource for improvement
- ✓ Currently in both upside only and downside risk contracts (MSSP, CPC+, CHI-CHI St. Vincent)

Achievements – Cost & Quality and goals

AHN has created significant savings and earned accordingly in performance-based incentives

- ✓ **Medicare Shared Savings Program:** Only MSSP-ACO in the State that generated savings and received incentives
- ✓ **Medicare Shared Savings Program:** Arkansas Health Network achieved a score of 94.8% and 86.6% in 2015 for GPRO Quality Metrics, in 2015 and 2016 respectively, which were reported to CMS.
- ✓ **Employee ACO:** In the current fiscal year, AHN is on track to create significant cost savings for the CHI St. Vincent Co-Worker Health Plan. Look forward to “exporting” capabilities in 2019
- ✓ **CPCI (Comprehensive Primary Care Initiative):** For 2,008 ABCBS patients, CHI St. Vincent clinics outperformed all other CPCI clinics in AR in quality and cost metrics

Contact Information

† Arkansas Health Network (AHN)

- † Two St. Vincent Circle
- † Little Rock, AR 72205
- † 501-552-3952
- † <http://www.arkansashealthnetwork.com/>

† Bob Sarkar

- † President
- † 501-552-3598
- † ibsarkar@stvincenthealth.com

† Rachel Longfellow

- † Market Director of Operations
- † 501-552-3237
- † rdlongfellow@stvincenthealth.com

† David Foster

- † INTERIM Chief Medical Officer
- † 501-552-8280
- † davidfoster@stvincenthealth.com

† Camille Wilson

- † Market Director of Pop Health Management
- † 501-552-3548
- † crwilson@stvincenthealth.com