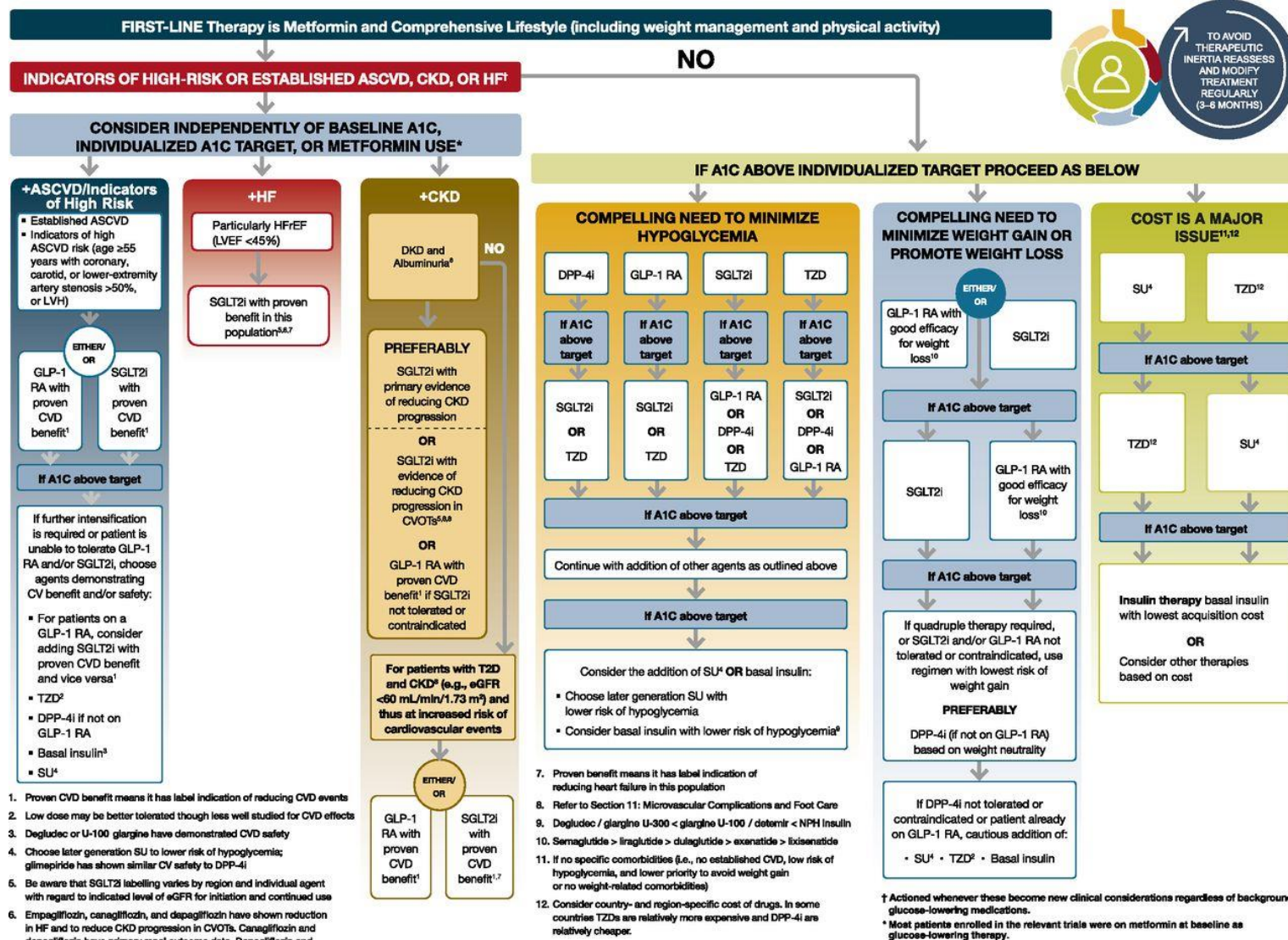


# Pharmacologic Approaches to Glycemic Management

Pharmacologic Approaches to Glycemic Management:  
*Standards of Medical Care in Diabetes - 2021. Diabetes Care*  
2021;44(Suppl. 1):S111-S124

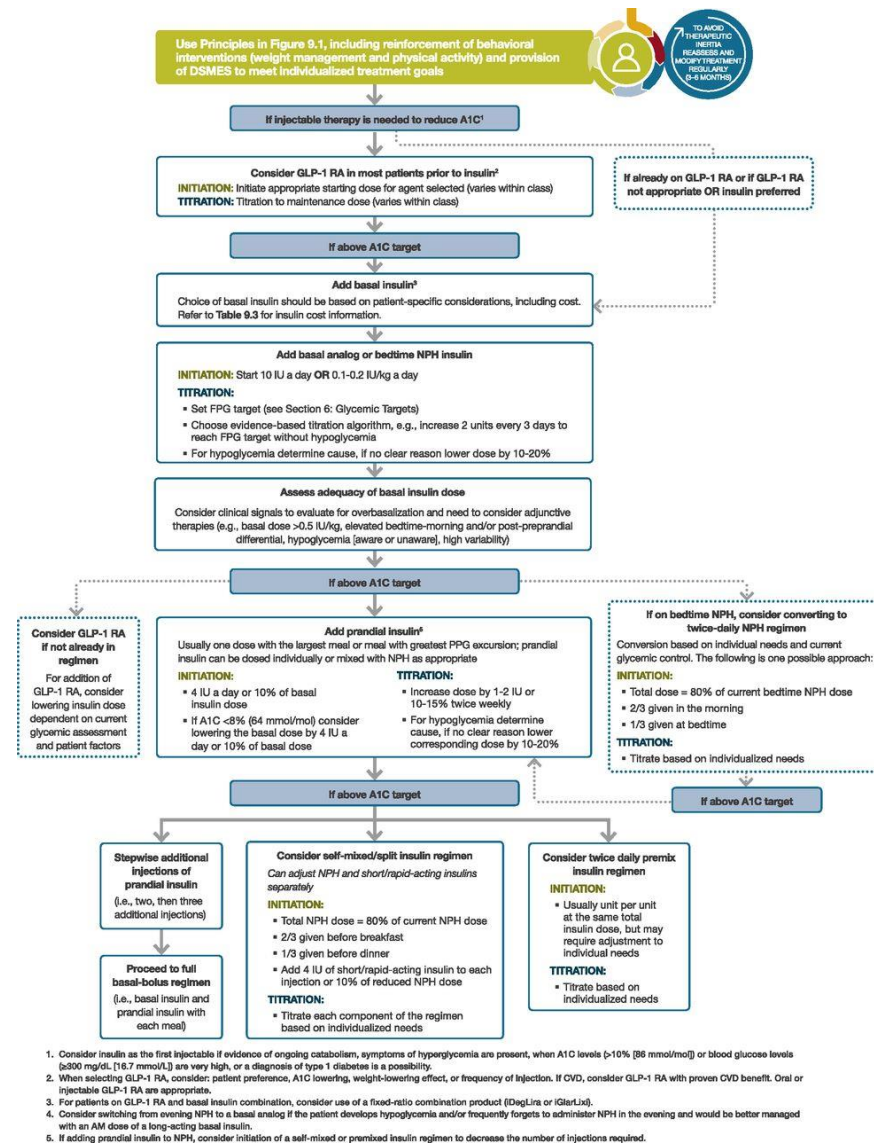
# Glucose-lowering medication in type 2 diabetes: 2021 ADA Professional Practice Committee (PPC) adaptation of Davies et al.



American Diabetes Association Dia Care 2021;44:S111-S124



# Intensifying to injectable therapies.



American Diabetes Association Dia Care 2021;44:S111-S124